

MYD series of induction heating system are used for weld, bending, piping, coating, fitting, stress relief, pre-weld heat and post-weld heat treatment

Model and Technical Parameters

Model	MYD-40KW	MYD-50KW	MYD-60KW	MYD-80KW	MYD-100KW	MYD-120KW
Input Power	3*380VAC (Default), 3*220VAC (Optional), 3*440VAC (Optional)					
Output Frequency	2KHZ ~ 30KHZ					
Output Power	40KW	50KW	60KW	80KW	100KW	120KW
Input Current	60A	75A	90A	120A	150A	180A
Air Cooling	Heating size:φ100-1500mm			Size: 800*560*1350mm		
DSP control	Max:900°C; Heating Speed: 5-400°C/min			Packing size:900*660*1560mm		
6 Channels control	10 curves recorder	Net weight: 120kg		Gross weight with parts: 155-260kg		
Main parts	Induction coil		K Thermocouple		R-1006 Temperature Recorder	
	Connection cable		Insulation Blanket		Thermocouple Connection cable	



- Input Voltage: 380V, 3 phase, 50/60HZ
- Output Frequency: 2KHZ ~ 30KHZ
- Output Power: 2KW ~ 40KW
- Cooling: air cooled
- Heating Speed: 5-400°C per minute
- Heating temperature range: -30°C-900°C
- Heating parts size range:φ100-1500mm or equal
- Induction coil: 10-45meters long high temperature cable with air cooled
- Temperature recorder: 6 Channels for temperature controlling
- Thermocouple: K Type (5-45 Meters long link cable)
- Size: 800*560*1350mm Net weight: 120kg; Packing size:900*660*1560mm, Gross weight: 155kg.

The option parts of induction heating system

- Induction heating power
- Induction coil (Clamp induction coil) or (Soft induction coil)
- Connection cable for the convenient to link the coil and the heating power

- Temperature controller
- PLC touch screen
- Temperature recorder with printer
- K type thermocouple&connection cable
- Insulation Blanket
- And other part.

MYD series induction heater to compare the resistant heat:

- Uniform
- High Speed
- Energy Saving: 30-80%

Features

- Air cooling: working well at -10°C-40°C
- Induction heating power: To heat the work job with insulation blanket around it. High heating speed and heating efficiency with little energy lost.
- PLC touching screen: Intuitive to see and easy to operate.
- Soft induction coil: Easy to wind on different work piece.
- The Removable opening Induction coil: easy to operate and move.
- Temperature recorder: Record the whole heating curve.
- Temperature Controller: Heating according to the heating requirement details with the $\pm 3^{\circ}\text{C}$ tolerance.

Applications&using fields

Our MYD series heating system are air-cooled induction heating equipment with DSP system.

Their main applications are pipeline heat, pre-weld heat, post-weld heat treatment, stress relief, injection mold heating, annealing, etc.

- Pre-heat:for coating, bending, fitting&unfitting, weld.
- Post-weld heat treatment: tank, boiler or other metal jobs
- Heating: mold heating, shipboard, zinc bath, large& irregular metal parts
- Pipeline heat: pipeline oil, pipeline gas, pipeline water, pipeline petrochemical and other pipeline material

The using fields involved are petrochemical, oil and gas pipelines, aerospace, shipbuilding, steel, tanks, boilers, vessels, pressure vessels, cylinders, metal structure, spatial structure, railway bridges, electricity water, mine construction, vehicle manufacturing, nuclear power, mining, plastics processing, energy saving process, mold, screw barrel industries,etc.

Easy • Efficient • Economic

Easy to install: Quick-release coupling.

Easy To Move: Through Lifting Eye or Wheel System.

Safe: Automatical Protect for Power Failure. **IP 25 Class**

IGBT Module: We adapt advanced IGBT Technology.

Smart control: All operation is micro computed and controlled through PLC touch screen.



Digital Display and Adjust for parameters, like output power and temperature setting up.

High Efficiency: Electric Power is converted directly to heat power with low power loss.

Failure Alert: Once operation occurs, a sounding alarm is activated and error box shown on PLC touch screen.

Integrated Module Design: System is more stable and low cost for maintenance.

Digital Recorder with optional printer is able to record the temperature data and create chart trends of the heating progress.

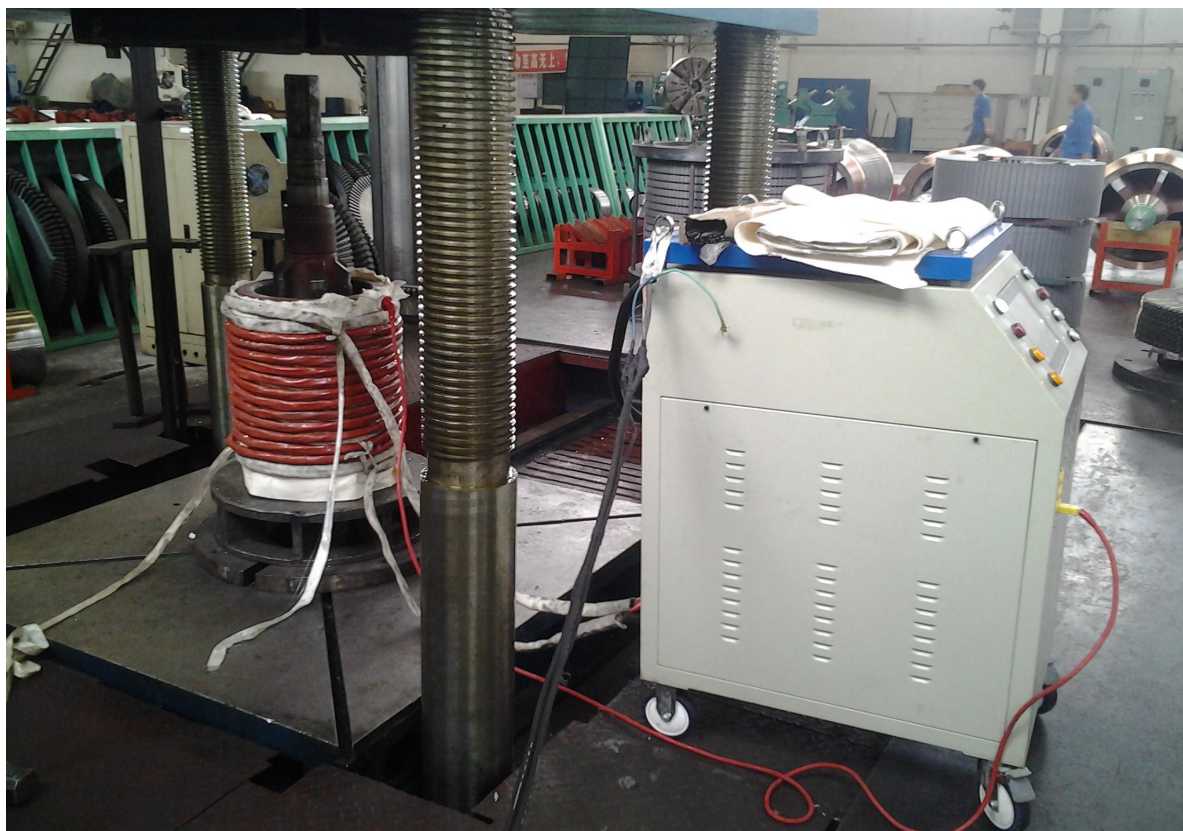
Accurate Measurement for temperature: Multi-points to detecting temperature; 6 channels for temperature control with $\pm 3^{\circ}\text{C}$ tolerance; Evenly heating.

Air Cool system allows system work at ultra circumstance: $-30^{\circ}\text{C} \sim 50^{\circ}\text{C}$.

Universal connector: water-proof; Insulation.

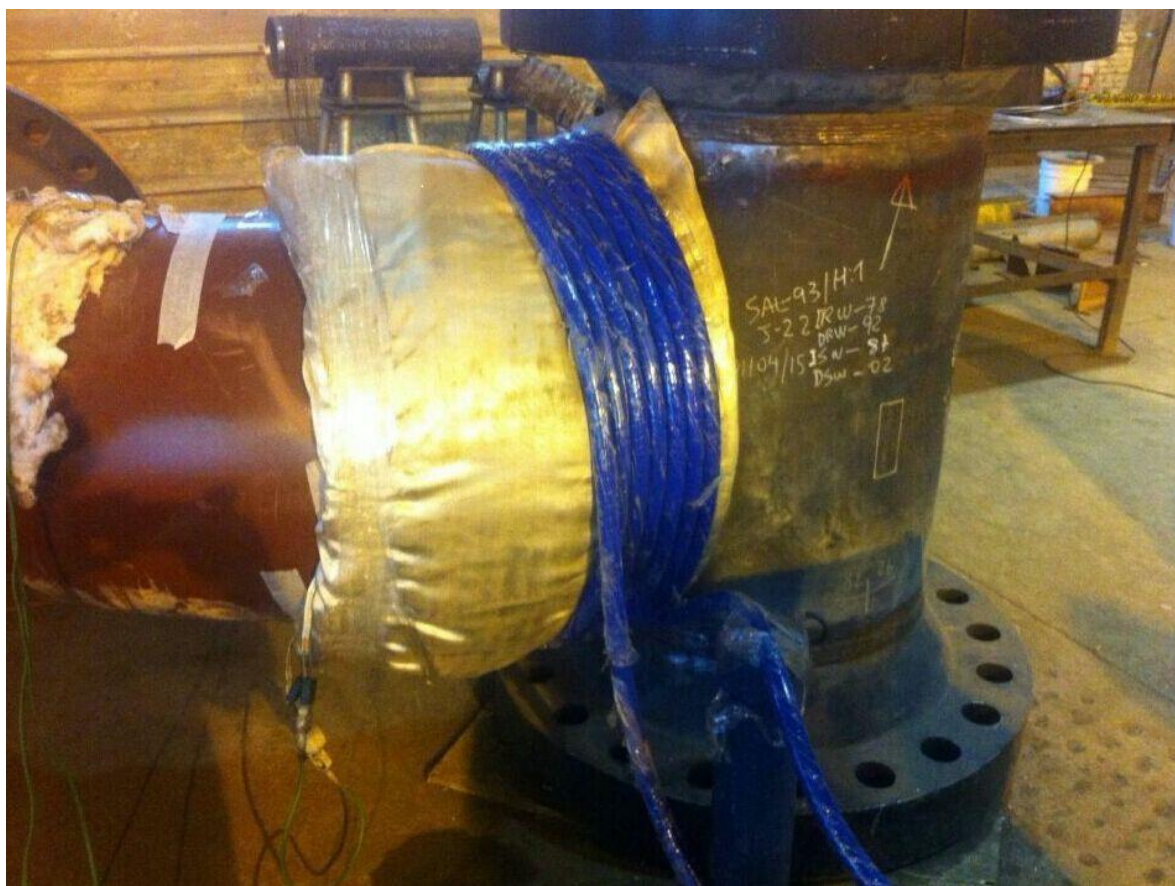
Some field heating samples:

1. Hot fitting and unfitting heating



2. Post weld heat treatment









3. Pre-weldheat







4. Heat for coating and painting





5. Pipeline materials heating



Qingdao Shuimu Induction Equipment Co.,Ltd Add: C-1805,Suning Plaza,Licang,Qingdao,China Tel: 86-532-89980348;
E-mail: sales@cmheat.com Web: <Http://www.cmheat.com>; <http://cmheat.en.alibaba.com/> Fax: 86-532-84623448

Packing details:

Packing size: 900*660*1560mm, Gross weight: 155kg.



After Service Contact:



Qingdao Shuimu Induction Equipment Co.,Ltd
Add: No.57, Xiangtan Rd,Licang,Qingdao,China
Tel: 86-532-89980348; Fax: 86-532-84623448
E-mail: service@cmheat.com
<Http://www.cmheat.com>; <http://cmheat.en.alibaba.com/>